

FOR IMMEDIATE RELEASE

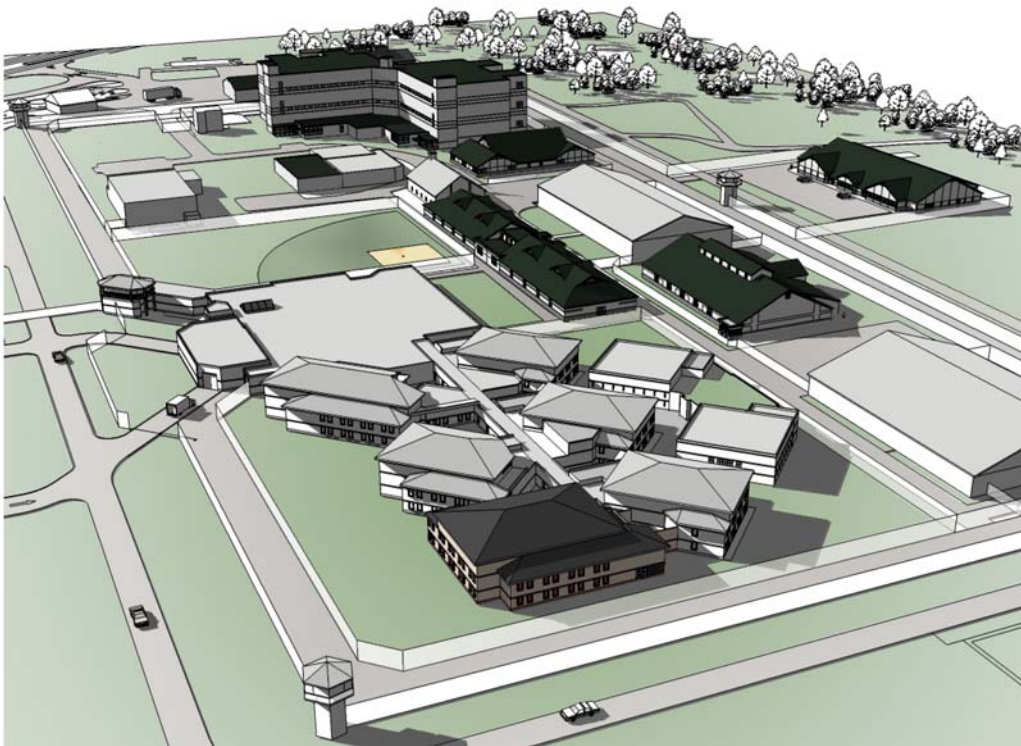
## R G ARCHITECTS TO PERFORM DOC MASTER PLAN

**Odessa, DE. - 11 November 2006** - R G Architects have been selected by the State of Delaware Department of Corrections to provide Master planning services for three major facilities. Studies will be performed for Dolores J. Baylor Women's Correctional Institute, Plummer Community Correctional Institute, and Sussex Correctional Institute.

R G Architects, along with LR Kimball Associates and Carter Goble Lee and Associates, will assist the Delaware Department of Corrections in assessing the facilities, as well as conceptually designing the renovations and additions. The team will also establish logistical phasing plans that will allow for demolition and reconstruction of portions of the facilities while maintaining proper inmate control and care. Two of the facilities consist of older, staff-intensive facilities and are in need of extensive facility upgrades. The third facility requires expanded housing and treatment facilities

The project is scheduled to begin immediately and to be complete in May 2007.

RGA is an Architectural firm located in historic Odessa, Delaware. For further information, please call 302-376-8100, or visit [www.rgarchitects.net](http://www.rgarchitects.net).



Conceptual Rendering for Master Plan